








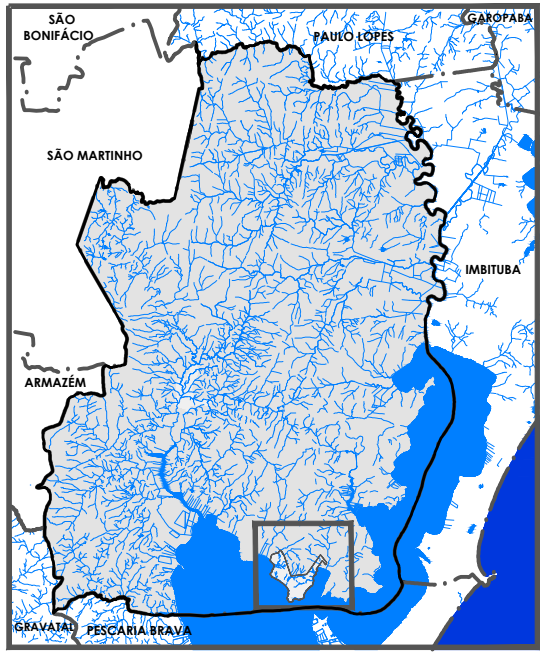


BASE CARTOGRÁFICA  
LEGENDA

-  PERÍMETRO URBANO
-  RODOVIAS
-  ESTRADAS
-  ARRUAMENTO
-  PONTES, VIADUTOS E ELEVADOS
-  AÇUDES, LAGOAS, LAGOS E TANQUES
-  RIOS PRINCIPAIS
-  RIOS SECUNDÁRIOS E CORPOS D'ÁGUA
- FONTE: ENGENMAP (2008)
-  VÉRTICE DO PERÍMETRO URBANO



0 125 250 500 m ESCALA: 1:14.000

PLANO DIRETOR MUNICIPAL FASE 4  
IMARUÍ LEGISLAÇÃO  
MAPA: ANEXO II  
PERÍMETRO URBANO